



NEOTECH

GSP3T0025.0200ASF

SP3T SWITCH

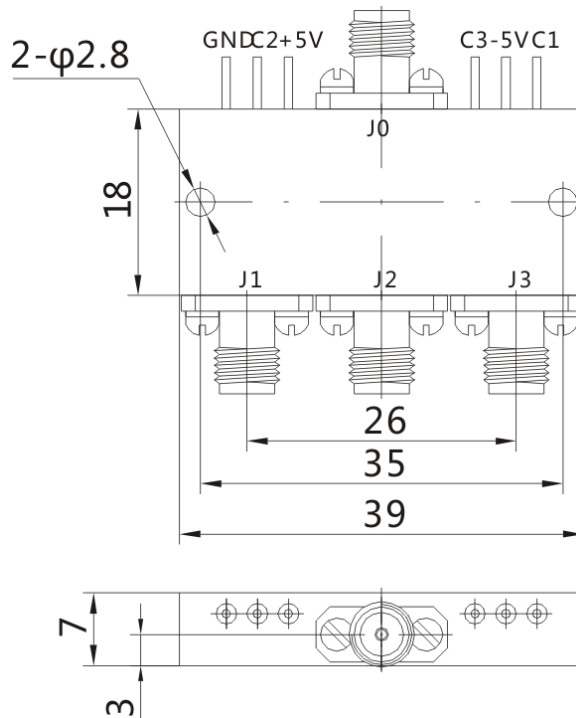
DATASHEET

ELECTRICAL SPECIFICATIONS

| Parameter | Minimum | Typical | Maximum | Units |
|-----------------------------|---|-----------|---------|-------|
| Type | Absorptive | | | |
| Frequency Range | 250 | - | 2000 | MHz |
| Isolation | 60 | - | - | dB |
| Insertion Loss | - | - | 1.5 | dB |
| VSWR | - | - | 2.0 | - |
| Switch Time | - | - | 120 | ns |
| No Damage Power | - | - | 1 | W |
| Operating Power | - | - | 20 | dBm |
| Power Supply | - | +5V / -5V | - | V |
| Control Logic | TTL, "0" → Low loss, "1" → Isolation, 3.6V < "1" < 5V | | | |
| Operating Temperature Range | -55 | - | +85 | °C |
| Finished | Laser Sealing | | | |
| Connectors | SMA-F | | | |

OUTLINE DRAWING

- All dimensions in mm



www.myneotech.com

| Rev. | Description | Date | Approved by |
|------|-------------|------|-------------|
| | | | |
| | | | |

For more information, please contact us at info@myneotech.com