



NEOTECH

GSP4T005.035ASF

SP4T SWITCH

DATASHEET

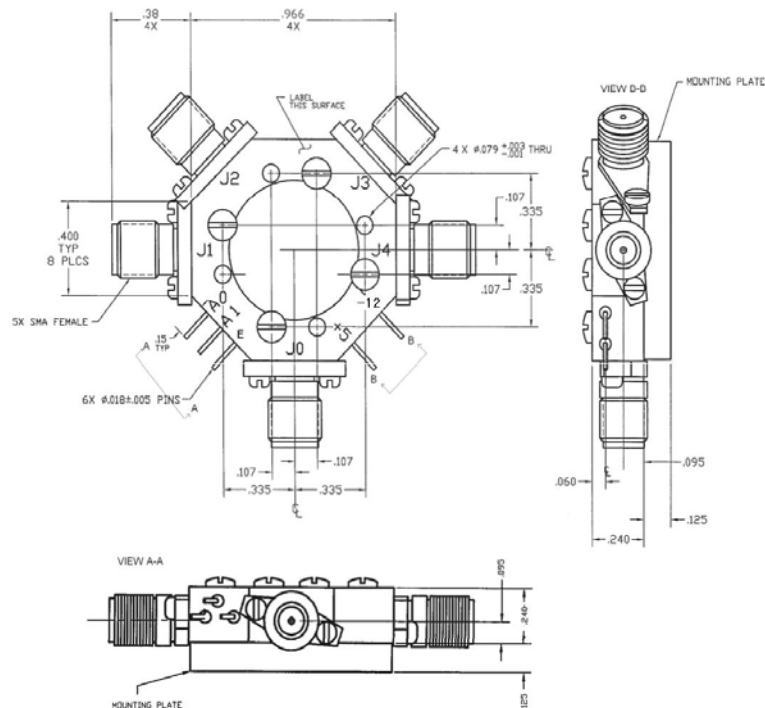
ELECTRICAL SPECIFICATIONS

Parameter	Minimum	Typical	Maximum	Units
Absorptive/Reflective	Absorptive			
Frequency Range	0.5	-	3.5	GHz
Insertion Loss	-	-	1.9	dB
Isolation	60	-	-	dB
Number of Ports	SP4T			
VSWR	-	-	2.0:1	-
Switching Speed	-	-	100	ns
Input Power	+5V at 150mA, -12V at 75mA			
Working Temperature Range	-55	-	100	°C
Storage Temperature	-65	-	120	°C
Control Type	TTL (Pin Enable)			
Case	SP4T-A			

Low Loss Port	TLL Input Level		
	A0	A1	E
J1	0	0	1
J2	1	0	1
J3	0	1	1
J4	1	1	1
ENABLE	X	X	0

OUTLINE DRAWING

Dimensions in inches



Rev.	Description	Date	Approved by

For more information, please contact us at info@myneotech.com



NEOTECH

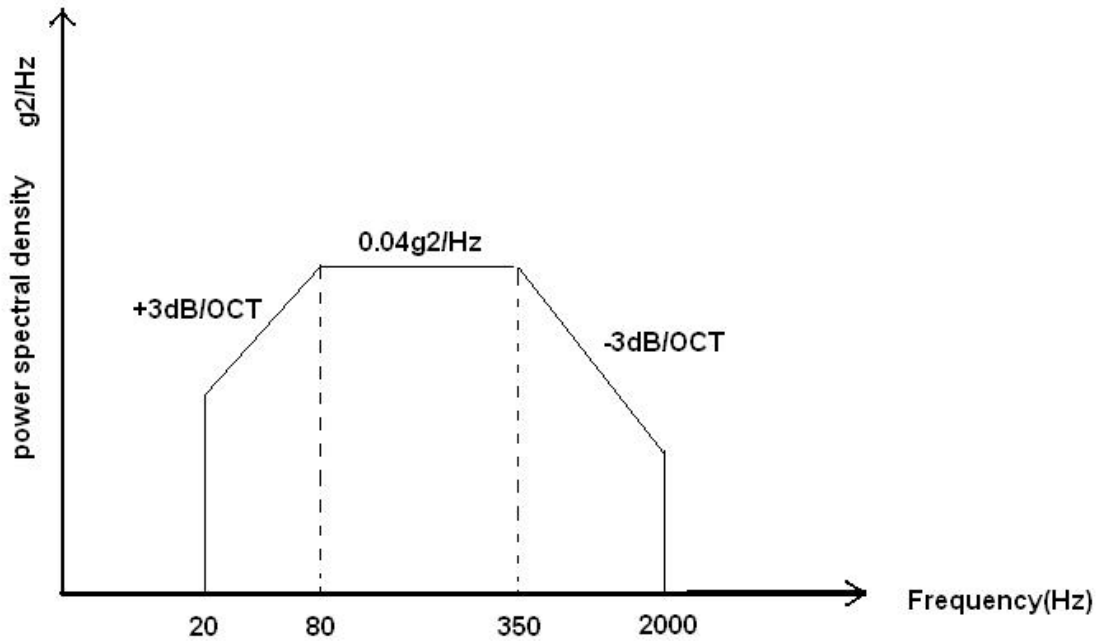
GSP4T005.035ASF

SP4T SWITCH

DATASHEET

ENVIRONMENTAL SPECIFICATIONS

Vibration, stress, power spectral density



Vibration stress power spectral density

Shock: half-sine wave, 50g, 11ms

Storage Temperature Range: $-65^{\circ}C$ to $+125^{\circ}C$

Working Temperature Range: $-55^{\circ}C$ to $+100^{\circ}C$

www.myneotech.com

Rev.	Description	Date	Approved by

For more information, please contact us at info@myneotech.com