



NEOTECH

GSP8T1200.1800SF

SP8T SWITCH

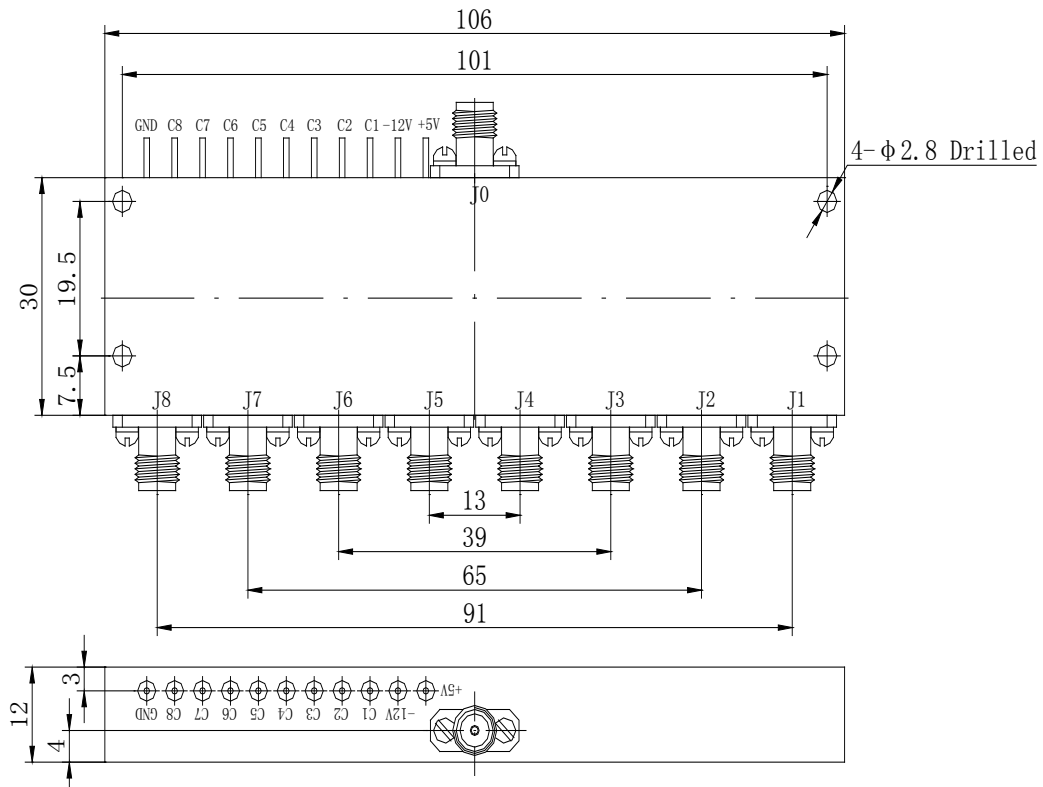
DATASHEET

ELECTRICAL SPECIFICATIONS

Parameter	Minimum	Typical	Maximum	Units
Frequency Range	12	-	18	GHz
Insertion Loss	-	-	4.8	dB
Isolation	70	-	-	dB
Switch Speed (Including Delay Time)	-	-	200	ns
Harmonics Level (Test at 0dBm)	70	-	-	dB
Harmonics Level (Test at 10dBm)	60	-	-	dB
Operating Power	-	20	-	dBm
Current at +5V	-	-	200	mA
Current at -12V	-	-	100	mA
Control Logic	TTL "1" = ON, "0" = OFF			
Operating Temperature Range	-55	-	+85	°C
RF Ports	Field Removable SMA-Female (Stainless Steel)			
Finish	AL conversion Coating/ Cover Laser Sealed to Housing			

OUTLINE DRAWING

- All dimensions in mm



www.myneotech.com

Rev.	Description	Date	Approved by

For more information, please contact us at info@myneotech.com



NEOTECH

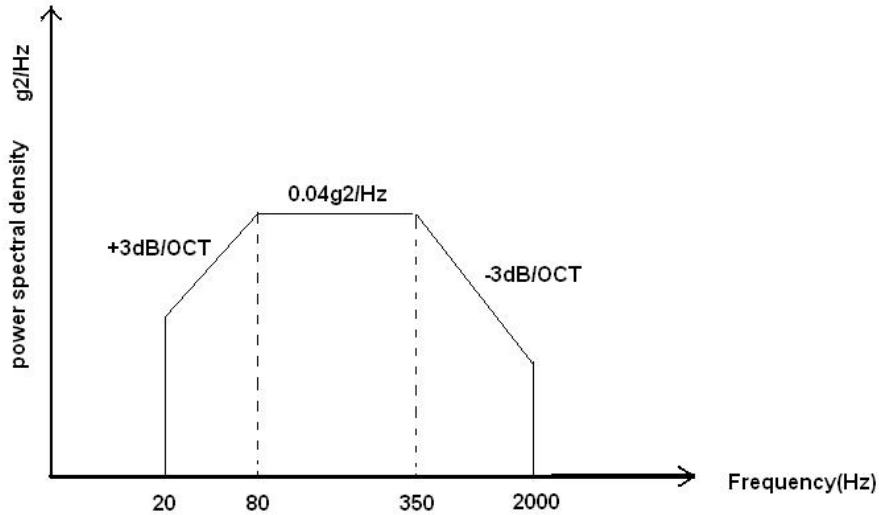
GSP8T1200.1800SF

SP8T SWITCH

DATASHEET

ENVIRONMENTAL SPECIFICATIONS

- **Vibration, stress, power spectral density**



Vibration stress power spectral density

- **Shock:** half-sine wave, 50g, 11ms

Rev.	Description	Date	Approved by