



NEOTECH

GC0012.0014TABNF1K

CIRCULATOR

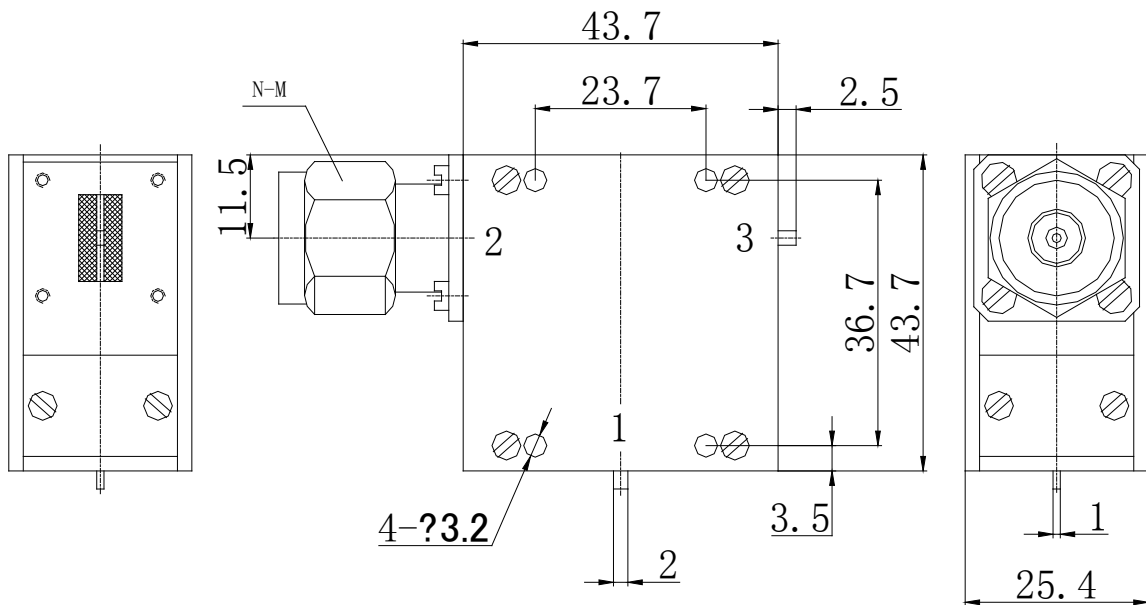
DATASHEET

ELECTRICAL SPECIFICATIONS

Parameter	Minimum	Typical	Maximum	Units
Frequency Range	1200	-	1400	MHz
Insertion Loss	-	-	0.4	dB
Return Loss	20	-	-	dB
Isolation	20	-	-	dB
Average Power	-	-	500	W CW
Peak Power	-	-	1	KW
Operating Temperature Range	-40	-	+85	°C
Impedance	-	50	-	Ω
Finish	Nickle Plated			

OUTLINE DRAWING

- Dimensions in mm
- Input/Output Ports: Tabs (Silver plated) / N-M
- Direction: 1→2→3



www.myneotech.com

Rev.	Description	Date	Approved by

For more information, please contact us at info@myneotech.com