



NEOTECH

GSP2T0800.1000RSF

SP2T REFLECTIVE SWITCH

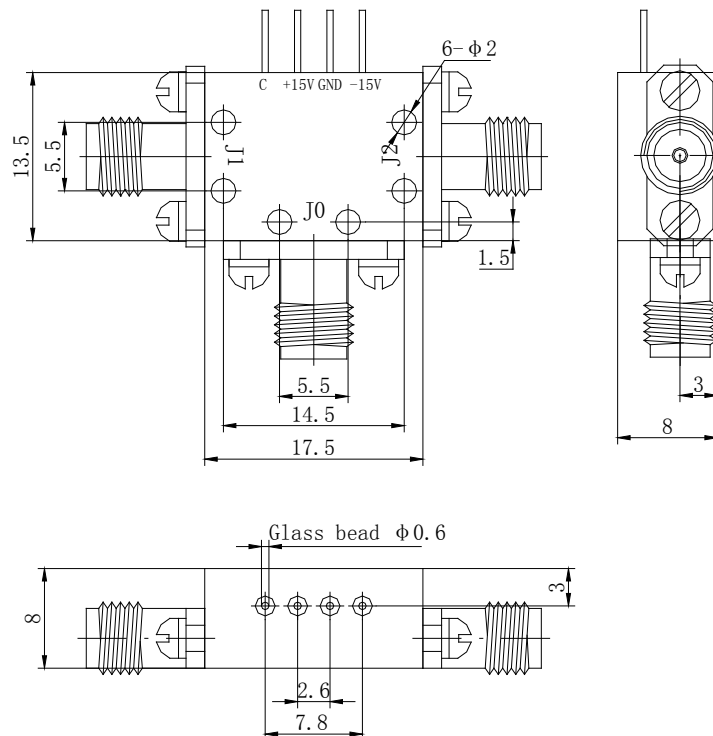
DATASHEET Rev. D

ELECTRICAL SPECIFICATIONS

Parameter	Minimum	Typical	Maximum	Units
Absorptive/Reflective	Reflective			
Frequency Range	8	-	10	GHz
Max RF Power (CW)	-	-	0.5	W
Insertion Loss	-	-	1.8	dB
Isolation	65	-	-	dB
VSWR	-	-	1.7:1	-
Switching Speed	-	100	-	ns
BIAS Conditions	[+15V +/--3V @ 80mA MAX] [-15V +/--3V @ 50mA MAX]			
Working Temperature Range	-55	-	+85	°C
Control	TTL LOW: J2 ON TTL HIGH: J1 ON			
Video Leakage	-	-	-65	dBm
Connectors	SMA-F			

OUTLINE DRAWING

- Dimensions in mm



Rev.	Description	Date	Approved by
B	Changed VSWR, Bias Condition and Control Logic	09/06/2014	AG
C	Changed Outline Drawing (with GND Pin)	10/06/2014	AG
D	Environmental Specs and Outline Drawing (1 control line + GND)	30/10/2014	AG

For more information, please contact us at info@myneotech.com



NEOTECH

GSP2T0800.1000RSF

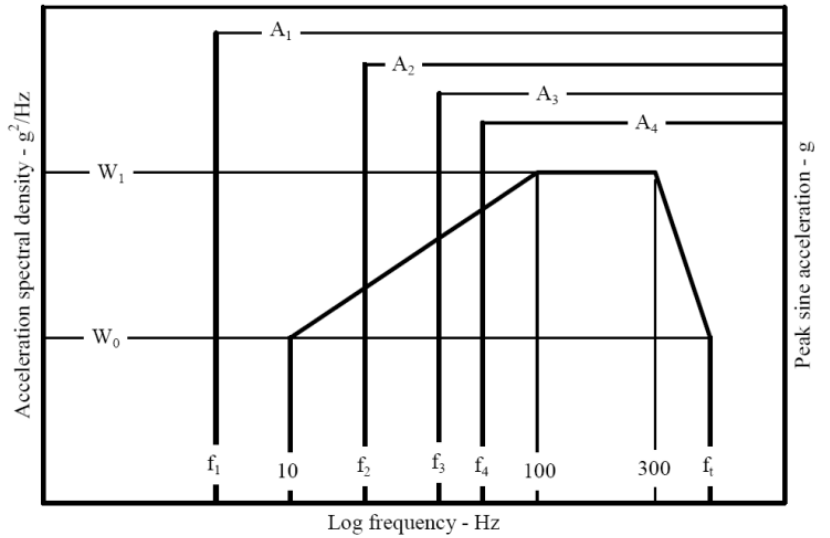
SP2T REFLECTIVE SWITCH

DATASHEET Rev. D

ENVIRONMENTAL SPECIFICATIONS

- **Altitude:** 40000 feet for test, 20000 feet for operate
- **Random vibration**
(desing guaranteed)

Fi [Hz]	ASD [g ² /Hz]	Ai [g]
10	0.001	
F1= 26		A0=2.5
100	0.01	
F2= 104		A1=0.16
F3= 208		A2=0.04
300	0.01	
F4= 312		A3=0.018
Ft= 500	0.001	



www.myneotech.com

Rev.	Description	Date	Approved by
B	Changed VSWR, Bias Condition and Control Logic	09/06/2014	AG
C	Changed Outline Drawing (with GND Pin)	10/06/2014	AG
D	Environmental Specs and Outline Drawing (1 control line + GND)	30/10/2014	AG

For more information, please contact us at info@myneotech.com