



NEOTECH

NSP6T2100.2500ASF.R

ABSORPTIVE SWITCH SP6T

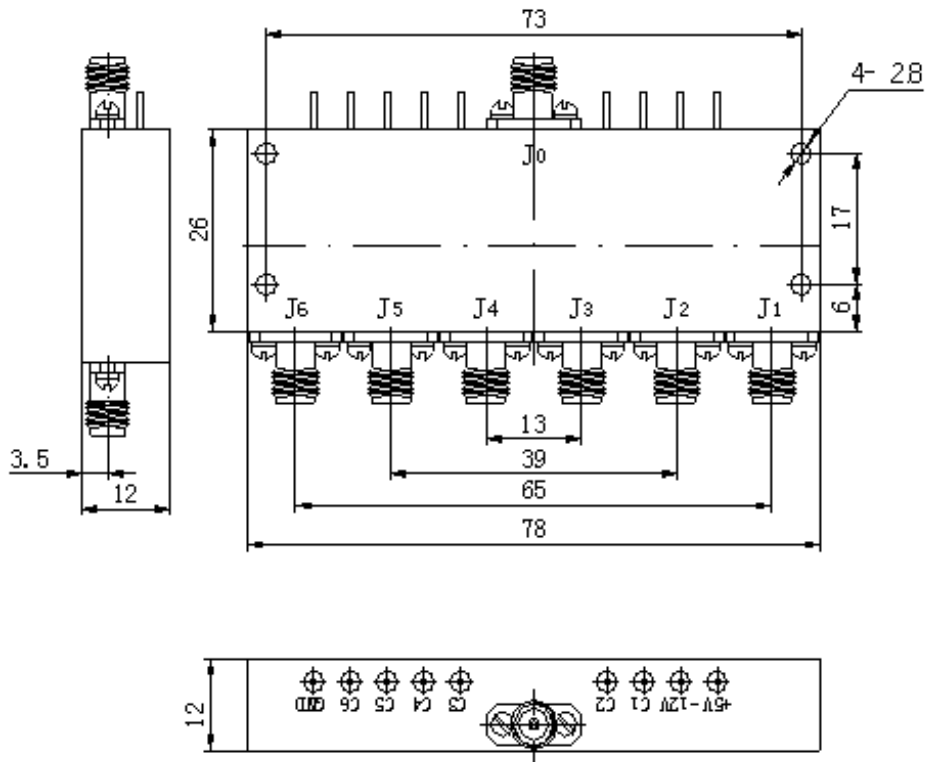
DATASHEET

ELECTRICAL SPECIFICATIONS

Parameter	Minimum	Typical	Maximum	Units
Frequency Range	21	-	25	GHz
Insertion Loss	-	-	6.0	dB
Isolation	70	-	-	dB
Switch Speed (Including Delay Time)	-	-	200	ns
Harmonics Level (Test at 0dBm)	60	-	-	dB
Operating Power	-	15	-	dBm
Voltage/Current at +5V	-	-	150	mA
Voltage/Current at -12V	-	-	100	mA
Control Logic	TTL "1" = ON, "0" = OFF			
Operating Temperature Range	-55	-	+85	°C
RF Ports	Field Removable SMA-Female (Stainless Steel)			
Finish	Switch Body and Cover: Aluminum /Gold-plated internally and Outside AL Conversion Coating. Glass Bead: Kovar/Gold-plated. Cover Laser Sealed to Housing.			

OUTLINE DRAWING

- Dimensions in mm



www.myneotech.com

Rev.	Description	Date	Approved by

For more information, please contact us at info@myneotech.com



NEOTECH

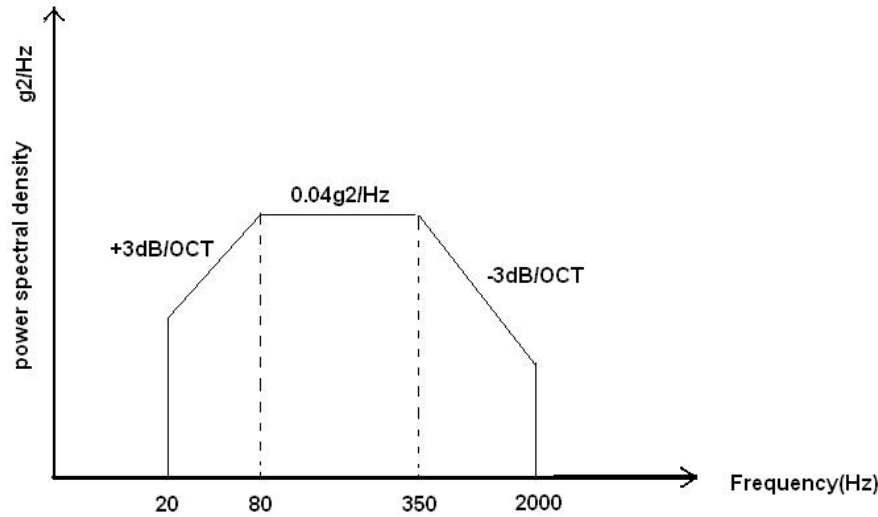
NSP6T2100.2500ASF.R

ABSORPTIVE SWITCH SP6T

DATASHEET

ENVIRONMENTAL SPECIFICATIONS

Vibration, Stress, Power spectral density:



Vibration stress power spectral density

Shock: half-sine wave, 50g, 11ms

www.myneotech.com

Rev.	Description	Date	Approved by

For more information, please contact us at info@myneotech.com